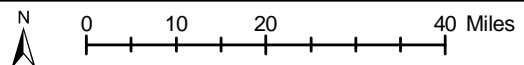
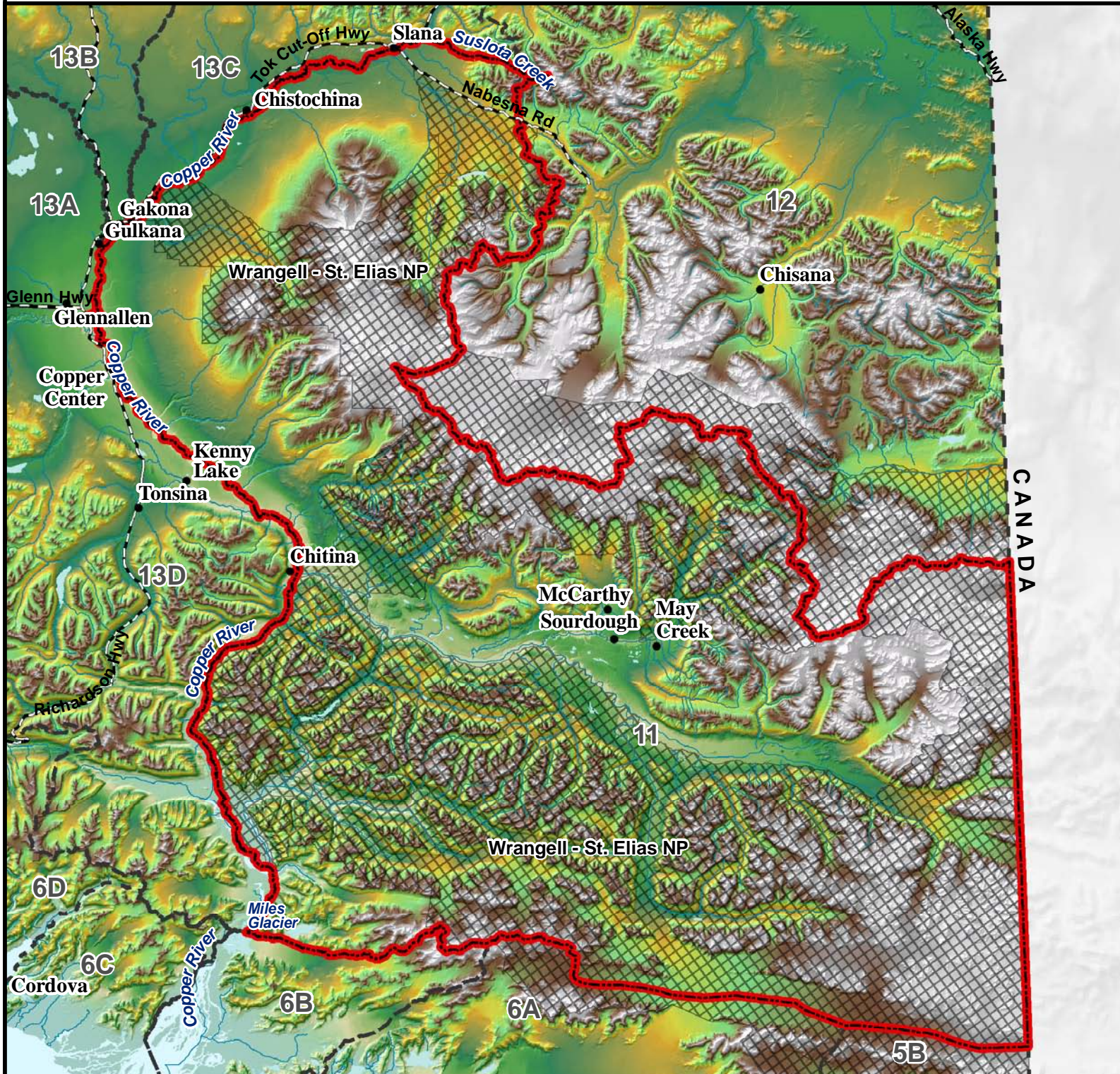







# Unit 11

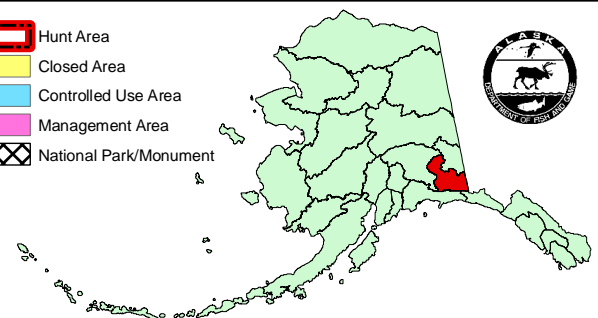
## Wolverine - General Hunt

### Residents and Nonresidents



**Unit 11**  
**Wolverine - General Hunt**  
 HUNT AREA: Unit 11.

-  Hunt Area
-  Closed Area
-  Controlled Use Area
-  Management Area
-  National Park/Monument



Please refer to the Alaska Hunting Regulations booklet for bag type, seasons, and additional regulations concerning this hunt.